



Rescue Studies – Ensuring a Smooth Transition

Cathy Hult, Director, Data Management

Lauri Nahabedian, Sr. Manager, Database Programming

Tuesday, April 25, 2023

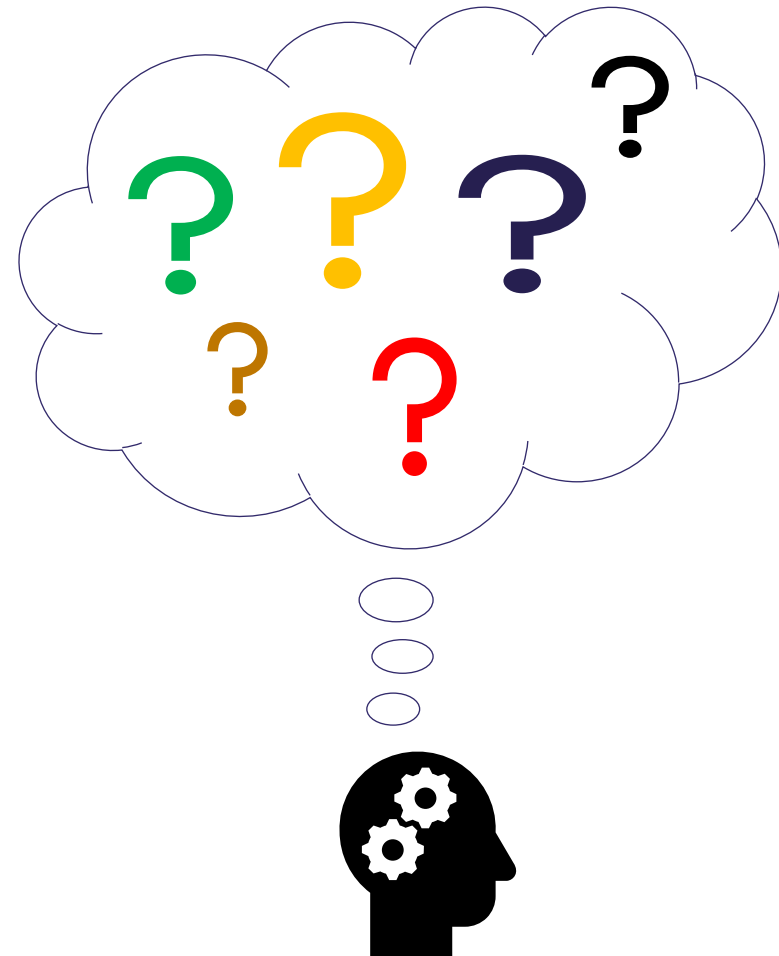
Rescue: What and Why

- What:
 - A study rescue is moving a study from one Medidata URL to another Medidata URL
- Why:
 - Study buyout
 - Sponsor acquired
 - Strained CRO relationship



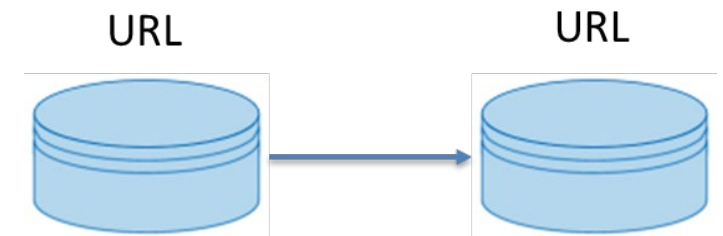
Challenges of a Rescue

- Anxiety
- Amount of data
- Study down time
- Timeframe
- Document procurement

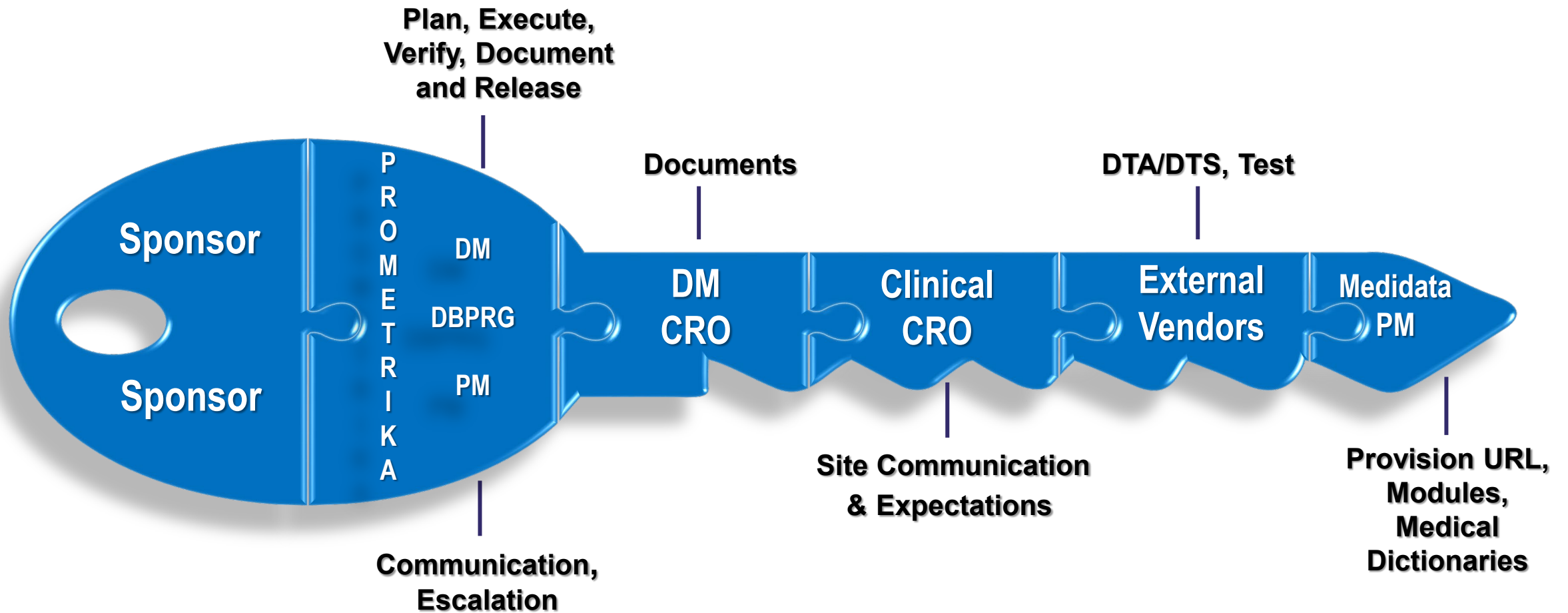


Case Study

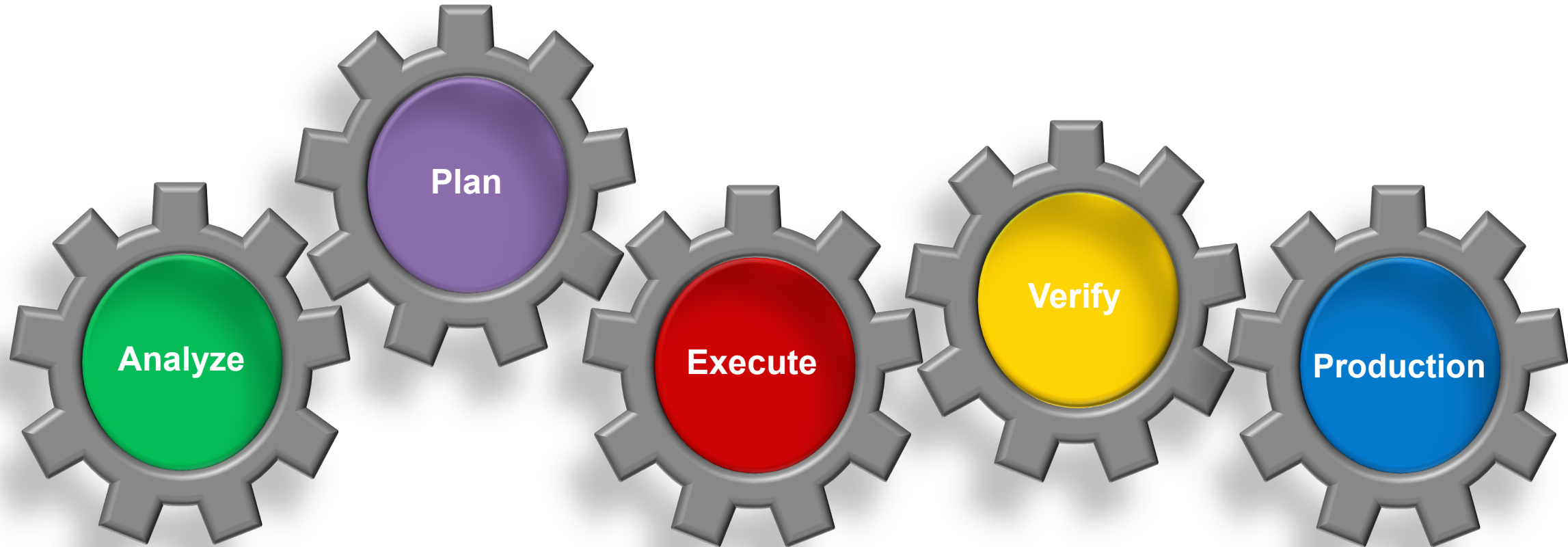
- Production study
 - Rare oncology, Phase I
 - Dose escalation and Expansion study
- Sponsor-owned URL
- Move to new sponsor URL
- 8 weeks from KOM to production live



Collaboration is Key



Study Rescue Process



Technical Analysis

- Critical document review and analysis
 - Protocol
 - Core Configuration
 - Architect Loader Specification (ALS)
- Review will determine
 - Medidata modules
 - External integrations
 - Other build documents



External Data Integration(s)

- Data Transfer Specification
- RWS configuration
- UAT of external integration(s)
- Capabilities of external vendor
 - Subjects
 - Data



Data Analysis

- Number of Subjects
- Number of Forms - total
- Number of Queries
 - Open and Answered
 - Canceled and Closed – only appear in Audit Trail
- Number of Forms
 - SDVed
 - DM Reviewed
 - Signed



Configuration Plan

- Develop Study Configuration Plan
- Develop Study Configuration Checklist



<study name> Study Configuration Plan
<sponsor> URL to <sponsor> URL
Version 1.0

Table of Contents

I.	INTRODUCTION	5
II.	SYSTEM DESCRIPTION.....	5
III.	ENVIRONMENT	5
IV.	CONFIGURATION APPROACH	5
V.	REQUIREMENTS	8
VI.	CONFIGURATION TEST PLAN (TP)	8
VII.	RISK ASSESSMENT.....	9
VIII.	PERSONNEL QUALIFICATION	9
IX.	NEW AND ONGOING PROJECTS	9
X.	DOCUMENTATION UPDATES	10
XI.	ISSUE REPORTING AND TRACKING	10
XII.	21 CFR PART 11 REQUIREMENTS AND IMPACT	10
XIII.	SUMMARY REPORT	10
XIV.	SYSTEM RELEASE PACKAGE	10

Task	Resource	Dependency
Create new URL <sponsor>.mdsol.com	Medidata	<sponsor> send license agreements to Medidata
Upload Medical Dictionaries	Medidata	
Configure URL	Medidata	
- Upload Core Configuration		
- Configure Cloud Admin Roles		
- Configure Rave Coder		
- Upload eLearnings		
Create <study name> study	PROMETRIKA	Need Study Creation form from DM
- Create the <study name> study on the new <sponsor> URL		
Configure Synonym Lists	PROMETRIKA	Need Synonym List spec from DM
- Download/Obtain the <study name> Synonym Lists from old <sponsor> URL		
- Create the <study name> Synonym Lists on the new <sponsor> URL		
- Upload old <sponsor> Synonym Lists to new <sponsor> Synonym Lists		
Lab Admin	PROMETRIKA	Need Site Creation forms from DM
- Download/Obtain the <study name> PROD site export from old <sponsor> URL		
- Upload <study name> site export to new <sponsor> DEV/UAT/PROD/MIG/Other		
- Download/Obtain Lab Loader from old <sponsor> URL		
- Remove <other study(s)> local lab ranges from the AnalyteRanges/Lab tab		
- Upload updated Lab Loader to new <sponsor> URL		
Spreadsheet Compare Lab Admin Loader	PROMETRIKA	
- Download the Lab Admin Loader from the new <sponsor> URL		
- Run spreadsheet compare on		
- the <study> Lab Loader from the old <sponsor> URL		
- the <study> Lab Loader from the new <sponsor> URL		

UAT Plan

- Develop re-configuration UAT Plan
 - Testing approach
 - Requirements
 - Test Plan
 - Risk Assessment
 - Issues Reporting and Tracking
 - Summary Report



Data Plan

- Develop Study Data Plan



<study name> Data Management Re-entry Plan
<sponsor> Study Reconfiguration on the <sponsor> URL
Version 1.0

Table of Contents

I.	INTRODUCTION.....	5
II.	SYSTEM DESCRIPTION	5
III.	ENVIRONMENT.....	6
IV.	TESTING APPROACH.....	7
V.	REQUIREMENTS	8
VI.	TEST PLAN (TP).....	8
VII.	RISK ASSESSMENT	9
VIII.	PERSONNEL QUALIFICATION.....	9
IX.	NEW AND ONGOING PROJECTS	9
X.	DOCUMENTATION UPDATES.....	9
XI.	ISSUE REPORTING AND TRACKING	10
XII.	21 CFR PART 11 REQUIREMENTS AND IMPACT.....	10
XIII.	SUMMARY REPORT	10
XIV.	SYSTEM RELEASE PACKAGE.....	10



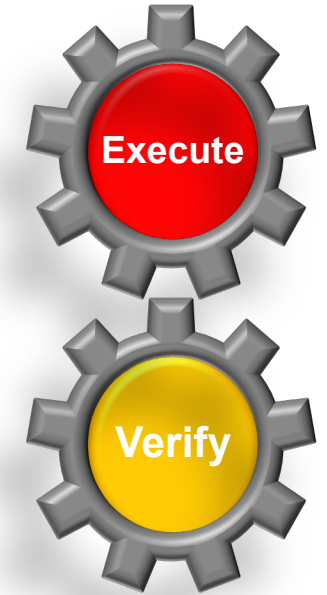
Data Plan

- Clinical Data
 - Data re-entry Guidelines
 - Data Entry team trained on re-entry guidelines
 - Sites/Subjects assigned
 - Re-Entry Tracker and Data Issues Tracker
 - No Change to SDV and DM Review
- Queries
- Query Tracker
 - Open
 - Answered



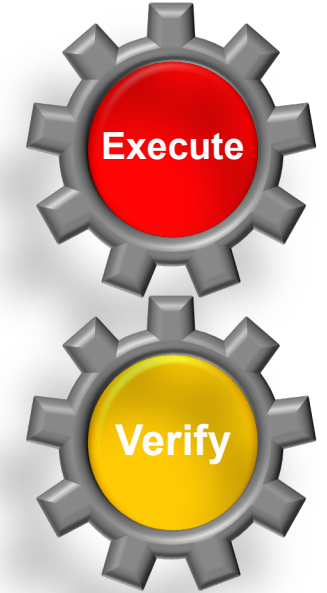
Execute & Verify Configuration Plan

- Medidata provision
 - URL, eLearning, Reports
 - Medical Dictionaries
- Execute the Study Configuration Checklist
- Verification by independent database programmer
- Write Configuration Summary Report



Execute & Verify Data Plan

- Execute the Study Data Plan
- Clinical Data
- Queries
 - Open
 - Answered
- Run SAS PROC COMPARE by subject



Production Live

- Upload production user export file from previous URL
- Remove users from previous URL



Rescue Result

- New URL and Dictionaries provisioned in 10 days
- Study running on new URL in 4 days
- UAT complete in 5 days
- Data entry complete in 7 days
- Study production live < 6 weeks from KOM



Thank You

